

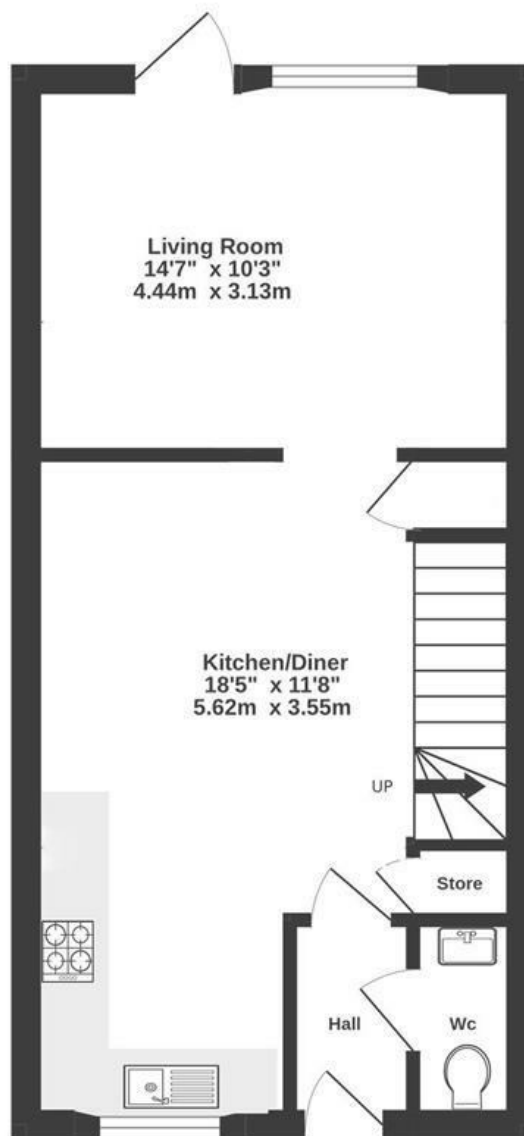
# Clover Way

## STOKE GIFFORD

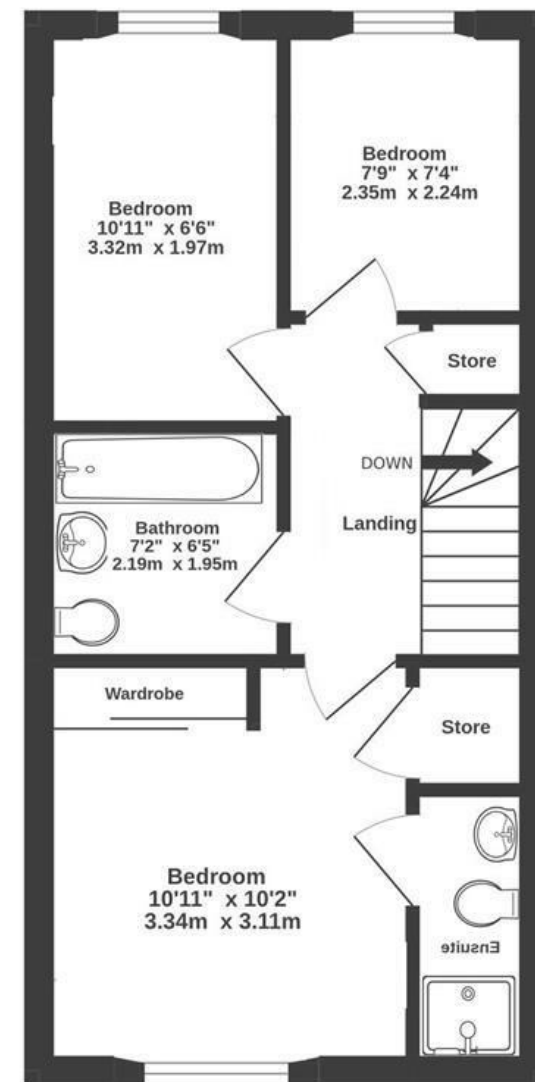
APPROXIMATE FLOOR AREA  
76.8 SQM / 826 SQFT



GROUND FLOOR



1ST FLOOR



**Boardwalk**

# Clover Way

STOKE GIFFORD, BRISTOL



£395,000



3 Bedrooms



BS34 8AZ



2 Bathrooms

*"Sitting on the patio when the sun is out is bliss. Whether it's a morning coffee in the spring, or an evening barbecue in the middle of summer. The sun hits the garden all day, bringing in warmth and light into the living room."*

